

LiveLink

Template Request Reference Guide

Guidance on filling in the online
Template Request Form

Welcome

This guide provides further information about our Template Request Form:
http://livelinktechnology.net/about/contact_support#template

When filling in this form, please provide as many of the requested details as possible, to help the design team here at LiveLink get a better idea of your requirements.

All template requests will be followed up with further discussion, prior to a quotation of price, so that we can ascertain the full extent of the work required.

Once a price and timescale has been agreed upon, if possible please also provide product photos and/or samples. These should have a suitable photo printed on to them for reference.

Product photos should be sent to: graphics@livelinktechnology.net.

Samples should be sent to:
LiveLink Technology - Graphics Dept
McCormack House
56a East Street
Havant
Hampshire
PO9 1BS

Please include your contact and product details with any physical samples sent, to ensure we can match specifications to the correct samples.

Product Details

Section 3 of 4

Product Details

To help us identify the product you wish to sell

Product Name (As Displayed To Customer):
Short-answer text

Product Description (As Displayed To Customer):
Short-answer text

Product Manufacturer (ie: MarvelPress):
Short-answer text

SKU/Product Code (ie: AJ02001p):
Short-answer text

Selling Price:
Short-answer text

Keyring Circular

£4.49

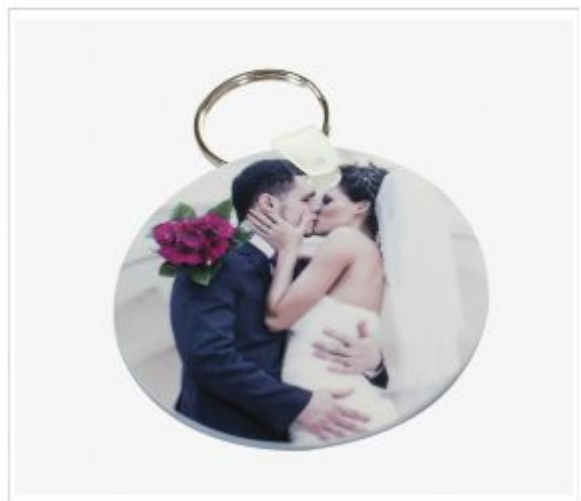
Keyring (Double Sided, Circular)

Never forget who's keys are who's with these personalised keyrings.

Lorem ipsum dolor sit amet, consectetur adipiscing elit, sed do eiusmod tempor incididunt ut labore et dolore magna aliqua. Ut enim ad minim veniam, quis nostrud exercitation ullamco laboris nisi ut aliquip ex ea commodo consequat. Duis aute irure dolor in reprehenderit in voluptate velit esse cillum dolore eu fugiat nulla pariatur. Excepteur sint occaecat cupidatat non proident, sunt in culpa qui officia deserunt mollit animi id est laborum.

Create It Now

[Share](#) [Print](#) [Twitter](#) [Store This](#) [Email](#)



Product Details such as the name, description and price will be displayed on the product page (to your customers) as shown above.

The Manufacturer and SKU code are for internal use only.

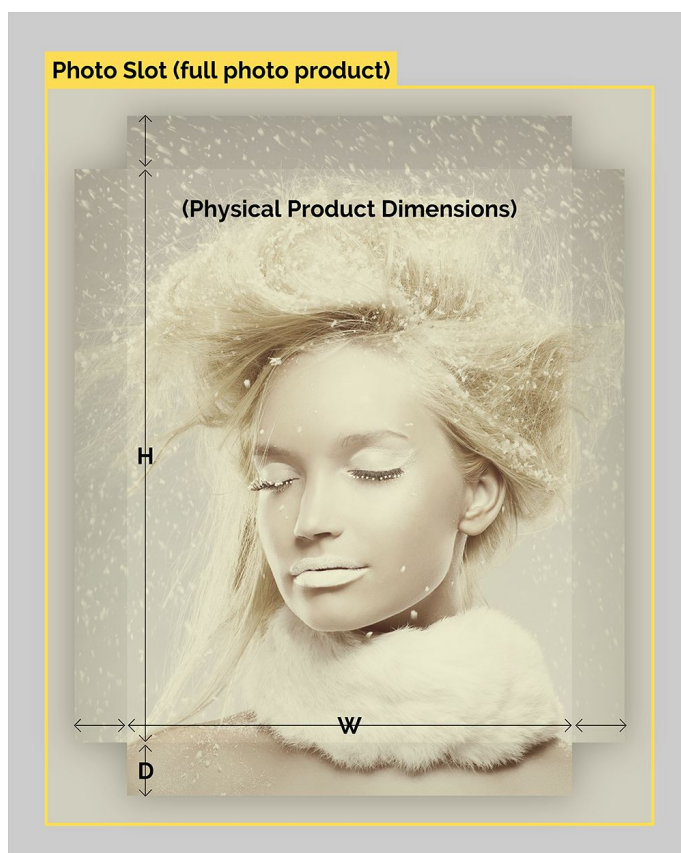
If you work with a remote fulfiller, such as MarvelPress, Jondo or Latent Light, enter them here - otherwise enter the name of your own Lab.

The SKU / Product Code may depend on whether you are using remote fulfilment or printing the products yourself. Larger fulfillers will likely have their own codes to identify their products, However, if you are handling production, you may prefer to simply call them something sensible (such as 'PRODUCTTYPE_SIZE', ie. 'MUG_LARGE').

Product Specification

The majority of new templates are for full photo products - meaning that the customer's photo will span the entire output you receive. Some of this may be wrapped around the sides of a product, or even trimmed off (bleed). Therefore, it is important that we know of any difference between the product size and output size when creating the template, so that the customer will see an accurate preview of what they will receive. We can also give customers the option to add text as they wish, by specifying a 'safe' area in which text will be legible (ie. not placed over corners, concealed sections, or too close to print edges).

Product Dimensions W: H: D: (mm)

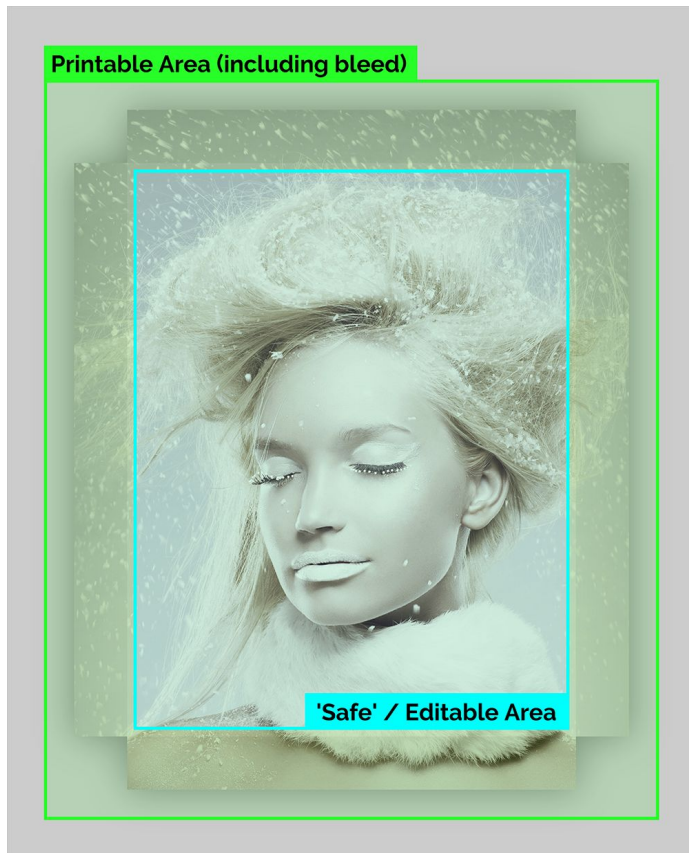


Here you can see an example of a canvas template. The photo slot extends beyond the product edges to demonstrate to the customer that certain areas of their image will not be visible once the product is assembled.

In the case of some products, such as canvases and phone cases, the customer's image covers the entire product, including being wrapped around the sides. As such you will need to specify the depth of the product in addition to height and width.

For products such as coasters or placemats, where the image will only cover the flat 'face' of the product, you need only specify the width and height.

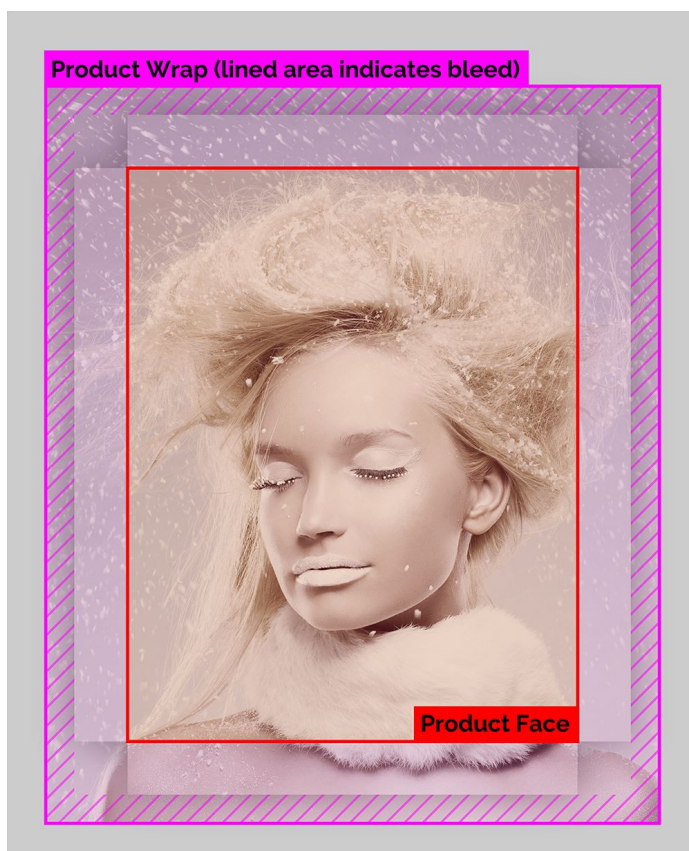
Physical Print and Safe Area Dimensions / Further Requirements



The Printable Area defined in the template determines the size and content of the output (physical print).

The Editable Area determines a safe zone within the Printable Area confines, in which customers can add text. It is possible to place multiple text boxes within this area, which can then be customised using the colours and fonts within the builder.

The Editable Area is optional - if you would prefer to restrict customer's text input, this can be discussed in more detail.



The sections shown in this example are for guidance only. However, should you need further instruction to be printed as part of the output (such as cutting or folding guides), this can be arranged.